



# Agricultural Grass and Forage Seed

2025

Cornwall's Independent Seed  
Processor and Merchant

Est. 1985



[www.swseeds.co.uk](http://www.swseeds.co.uk)  
01208 881198



# Contents

Best Sellers	4
Grass Mixtures	10
Short Term Leys: 1-2 years	10
Medium Term Leys: 3-4 years	12
Long Term Leys	14
Recommended Mixtures	16
Roots & Green Manuring	18
Game Cover	20
SFI Schemes	22
CSAM2/SAM2 - Multi-species Winter Cover Crop	22
SOH2: Multi-species Spring/ Summer Cover Crop	24
SOH4: Winter Cover following Maize Crops	25
CSAM3/SAM3/ GS4 - Herbal Leys	26
CIPM2/ IPM/AB8- Intergrated Pest Management	28
CAHL1/ AHL- Pollen and Nectar Flower Mix	31
CAHL1/ AHL2- Winter Bird Food on arable/horticultural land	32
CAHL3/ AHL3- Grassy Field corners or blocks	34
AHW1-AB16- Bumblebird Mix	35
AHW2-AB12- Supplementary Winter Bird Food	36
AHW3-AB3: Beetle Banks	37
WBD4- Arable Reversion to Grassland with Low Fertiliser Input	38
Wildflowers	39
Lawn & Landscaping	41
Glossary of Grasses and Herbs	42
Glossary of Wildflowers	45

# Why choose us?



## Quality Service

45 years of experience



## Friendly Advisors

Here to help



## Delivery Included

On all seed orders



## Premium Products

A wide variety available



**SWS**  
South West Seeds



BEST SELLER

# Regal Grass Mixture

- The finest quality varieties selected for cutting and grazing regimes.
- 5+ year permanent flexible mixture, suitable for cutting and grazing.
- Very persistent and winter hardy.
- Spread of varieties to provide a balanced sward.
- Clovers selected for persistence, under long term dual purpose management.
- Timothy promotes early production and acts as a sweetener to the mixture.
- High protein levels and D-values from the clover and tetraploid grasses.
- Nitrogen fixing from the clover blend.
- We can add herbs to this mixture and the proportion of clover can be increased or decreased as required. Contact us for details.

## Mixture:

1.50 kg	Agaska INT DIP
1.75 kg	Nifty INT DIP
3.50 kg	Ritchie INT TET
2.75 kg	Kendal Late DIP
3.50 kg	Nashota Late TET
1.00 kg	Rasant Timothy
1.00 kg	Restormel White Clover Blend

**U** 5+ Years Dual Purpose

**SR** 15kgs/Acre

Organic also Available



BEST SELLER

# Cut & Graze Grass Mixture

- 3-4 year medium term dual purpose mixture giving high annual yield for both cutting and grazing regimes.
- Good sward density.
- Low soil temperature growth which gives it excellent winter hardiness.
- Nitrogen fixation from clovers.
- We can add herbs to this mixture and increase or decrease the amount of clover as required. Contact us for details.

## Mixture:

3.50 kg	Cordial HYB TET
3.25 kg	Kirial HYB TET
2.75 kg	Nolwen INT TET
2.00 kg	Galgorm INT TET
2.50 kg	Nifty LATE DIP
1.00 kg	Kernow White Clover Blend

**U** 3-4 Years Dual Purpose

**SR** 15kgs/Acre

Organic also Available



# Horse & Pony

- This mixture is designed to supply quality grazing with the potential of hay.
- Timothy in the mixture adds sweetness and ease of digestibility.
- The use of SSMG and Red Fescue keeps the bottom of the sward tight to help suppress weed competition and reduce damage by hooves.
- This mixture can be supplied with a herb mixture.
- Diploid varieties are used for lower sugar to prevent laminitis.

## Mixture:

3.00kg	Boyne INT DIP
4.00kg	Agaska INT DIP
4.00kg	Aston King Late DIP
1.50kg	Comer Timothy
0.50kg	Evora Smooth Stalk Meadow Grass
2.00kg	Maxima 1 Creeping Red Fescue

**U** Cutting and Grazing

**SR** 15kg/Acre

**SD** March- September



BEST SELLER

# Heritage Hay Meadow & Wildflower Mixture

- A blend especially designed as a traditional Hay Meadow.
- Sold with or without the wildflower addition.
- The components are safe for grazing animals and for feeding the hay crop to stock.
- This mixture requires cutting late in the season to allow the seeds to shed.
- Do not allow thatch to build up in the bottom of the crop.

## Grass Mixture:

4.25kg	Meadow Fescue
2.00kg	Timothy
1.00kg	Smooth Stalk Meadow Grass
1.00kg	Rough Stalk Meadow Grass
1.00kg	Crested Dogstail
0.50kg	Meadow Foxtail
0.50kg	Intermediate Perennial Ryegrass
0.50kg	Late Perennial Ryegrass
0.50kg	Cocksfoot
0.50kg	Sheeps Fescue
0.50kg	Tall Oat Grass
0.50kg	Red Clover
0.25kg	Yellow Oat Grass

## Plus optional 0.75kg Wildflower Mixture:

10.0%	Oxeye Daisy
10.0%	Ladys Bedstraw
8.50%	Common Knapweed
7.50%	White Campion
7.50%	Self Heal
7.50%	Red Campion
5.00%	Cornflower
5.00%	Corn Marigold
5.00%	Field Poppy
5.00%	Small Burnet
5.00%	Common Sainfoin
5.00%	Yarrow
5.00%	Yellow Rattle
3.50%	Birdfoot Trefoil
3.00%	Common Sorrel
2.50%	Betony
2.50%	Corn Chamomile
2.50%	Field Scabious

- SR** 13kgs/Acre (Grasses only)
- SR** 13.75kgs/Acre (Grasses & Wildflower mix)
- SD** March - September



BEST SELLER

# CALH2 1 Year Winter Bird Food

- Diverse mixture that gives a range of plants that produce large amounts of seeds.
- Can be sown as a single crop or mixed with a cereal crop, Triticale offering the best choice.
- Sow in strips at least 6 metres at the edge of the field or in blocks across the field.

## Mixture:

20.00%	Linseed (Flax)
18.50%	Millet Blend (Red & White)
10.00%	Fodder Radish
06.60%	Quinoa Blend
11.60%	Mustard
13.30%	Rape Kale Hybrid
03.30%	Phacelia
16.70%	Sunflower Blend



**U** 1 Year Duration

**SR** 8kgs /Acre

**SD** Spring or Autumn



# SAM3 Regal Special (No Chicory)

- Highly recommended seed mixture.
- Allow time for all species to germinate.
- Productive and very high-quality forage.
- Reduces use of applied fertiliser.
- Performs on most types of soils.
- Vigorous growth.
- Supplies food and habitat for invertebrates including crop pollinators.
- Use on arable and temporary grassland.
- Always keep records and photographic evidence of growth

## Mixture:

2.70 kg	Perseus Festulolium
1.10 kg	Boyne PRG Int Dip
1.10 kg	Calibra PRG Int Tet
2.00 kg	Swan PRG Late Dip
2.00 kg	Natasha PRG Late Tet
0.40 kg	Barelite Tall Fescue
0.40 kg	Comer Timothy
0.40 kg	Maxima Smooth SMG
0.20 kg	Altaswede Clover
0.30 kg	Red Clover Blend
0.60 kg	Ezzelina Lucerne Alfalfa
0.80 kg	Restormel White Clover Blend
0.20 kg	Birdsfoot Trefoil
0.45 kg	Sheeps Parsley
0.45 kg	Sheeps Burnet
0.50 kg	Tonic Plantain
0.30 kg	Fenugreek
0.10 kg	Yarrow

**U** 3 Year Duration

**SR** 14kgs /Acre



# Grass Mixtures

## Short Term Leys: 1-2 years



### Protein Cutter

Organic also Available

- 1-2 year low input mixture.
- Benefits include high protein and trace elements and will fix large amounts of atmospheric nitrogen for future cropping.
- The presence of perennial ryegrass with its prostrate habit fills out the bottom of the crop.
- Good disease resistance.

**U** 1-2 Years Cutting

**SR** 15kgs/Acre

#### Mixture:

3.00kg Alamo IRG DIP  
3.00kg Melsprinter IRG TET  
2.00kg Boyne INT DIP

2.50kg Merula Red Clover DIP  
2.00kg Aston Crusader HYB TET  
2.50kg Nolwen INT TET



### Overseed Mixture

- An ideal mixture to stitch into a damaged or worn out pasture.
- Tetraploids are more aggressive and establish more quickly than Diploid varieties.
- Ideally this mixture should be direct drilled or broadcast if the field has been cut low or grazed hard.
- Produces high sugars and has excellent ground cover.

**U** 1-3 Years

**SR** 10kgs/Acre

#### Mixture:

2.00 kg Messina IRG TET  
3.00 kg Cordial HYB TET

3.00 kg Calibra INT TET  
2.00 kg Nashota LATE TET



## Lamb Finisher

- Broad leaf perennial herb mixture.
- High protein clovers and tetraploid grass.
- Highly digestible and palatable.
- Rapid regrowth, don't cut to close, leave at least 7-8 cm stubble.
- Chicory reduces internal parasites in stock.

**U** 2-3 years Grazing

**SR** 8kgs/Acre

### Mixture:

3.00kg Calibra INT TET  
2.00kg Choice Chicory Herb  
1.00kg Merula Red Clover

1.00kg Diplomat Red Clover  
1.00kg Dumnonia White Clover Blend



## Meadow Fescue

Organic also Available

- Blended for damp soil conditions.
- This mixture is ideal for making hay or silage.
- Meadow Fescue and Timothy perform better than PRG in cooler, wetter soils.
- The palatable leafy regrowth of Meadow Fescue makes this mixture ideal for aftermath grazing.
- Timothy adds early growth to the mixture and with the late tetraploid adds sweetness to the crop.
- Red Clover adds protein and is nitrogen fixing.

**U** Cutting

**SR** 14kgs/Acre

### Mixture:

1.60kg Boyne INT DIP  
1.90kg Nolwen INT TET  
1.00kg Melfrost LATE TET

4.75kg Pardus Meadow Fescue  
1.40kg Winnetou Timothy  
1.35kg Comer Timothy

1.00kg Merula Red Clover  
1.00kg Diplomat Red Clover

# Medium Term Leys: 3-4 years



## Abundance

Organic also Available

- 3-4 year medium term dual purpose ley.
- Strong growth at low soil temperatures.
- High protein and D-value.
- Produces excellent silage.
- Suitable for grazing, silage and haylage.
- Deep rooted Festuloliums.
- Can provide 3-4 cuts per year.

U

3-4 Years Dual Purpose

SR

14kgs/Acre

### Mixture:

2.50kg Rusa HYB TET  
2.75kg Merlin Festulolium

2.75kg Persuis Festulolium  
2.25kg Aston Vision INT TET

1.50kg Toddington LATE DIP  
2.25kg Nashota LATE TET



## Drought Buster Multi-Use

- Fast growing, hybrid mixture.
- Quick to establish with deep rooting grasses.
- Grows in most soil types and can be utilised in drier soils.
- Heavy yielding, lasting 3-4 cutting regimes.
- Option to add red clover to mixture.
- Fojtan is a Hybrid of Tall Fescue x Italian Ryegrass.

U

1-5 Years Dual Purpose

SR

12kgs/Acre

### Mixture:

6.00kg Fojtan Festulolium TET

3.00kg Aston Crusader HYB TET

3.00kg Kendal LATE DIP



## Early Bite

Organic also Available

- Designed for full season production.
- Quality varieties producing maximum yields and palatability.
- Good disease resistance.
- The clover blend is suitable for all stock grazing.
- We can add herbs to this mixture and the proportion of clover can be increased or decreased to suit your requirements. Contact us for details.

**U** 3-4 Years Grazing

**SR** 14kgs/Acre

### Mixture:

2.00kg Abyss HYB TET  
3.00kg Agaska INT DIP

2.00kg Calibra INT TET  
2.00kg Richie INT TET  
1.50kg Toddington LATE DIP

2.00kg Nashota LATE TET  
0.75kg Rasant Timothy  
0.75kg Dumnonia White Clover Blend



## Maxicut

- 1-3 years high yielding silage mixture and grazing mixture.
- Establishes quickly. Benefits from Festulium grasses.
- Responds well to high inputs.
- 3-4 good quality cuts can be expected.
- Mixture will grow in soils temperatures as low as 3 degrees C.
- A favourable mixture for drier soils.

**U** 1-3 Years Silage and Grazing **SR** 13kgs/Acre

### Mixture:

1.50kg Alamo IRG DIP  
2.00kg Melsprinter IRG TET

2.00kg Galgorm INT TET  
4.00kg Cordial HYB TET

2.00kg Lofa Festulium TET  
1.50kg Persius FestuliumTET

# Long Term Leys 5+ Years



## Permanent Plus

- Especially designed for intensive grazing systems.
- This mixture will provide a dense, persistent and productive sward giving excellent yield, quality and palatability.
- Provides production from early spring to late autumn.
- Do not overgraze in the first year - let the clover establish.
- We can add herbs to this mixture and the proportion of clover can be increased or decreased as required. Contact us for details.

**U** 5 +Years Grazing

**SR** 15kgs/Acre

### Mixture:

2.50kg Boyne INT DIP  
2.00kg Nifty INT DIP  
3.00kg Calibra INT TET

2.50kg Toddington LATE DIP  
3.00kg Nashota LATE TET

1.00kg Comer Timothy  
1.00kg Dumnonia White Clover Blend



## Traditional Permanent

- High quality sheep and cattle grazing.
- Excellent mid to late summer production.
- Very palatable and recovers quickly from grazing.
- Clover enhances soil fertility. Allow the red clover to seed every 2-3 years.
- Creeping Red Fescue maintains a dense bottom to the mixture.
- We can add herbs to this mixture and the clover can be increased or decreased as required. Contact us for details.

**U** 5 +Years Grazing

**SR** 15kgs/Acre

### Mixture:

1.25kg Nifty INT DIP  
1.50kg Boyne INT DIP  
1.50kg Agaska INT DIP

2.50kg Calibra INT DIP  
2.00kg Toddington LATE DIP  
2.00kg Nashota LATE DIP

1.00kg Maxima 1 C Red Fescue  
1.00kg Dumnonia W Clover blend  
0.75kg Merula Red Clover  
1.50kg Comer Timothy



## Meadow Fescue

Organic also Available

- A highly palatable and persistent mixture which will establish well in cool, moist soils.
- Will out yield Perennial Ryegrass in wetter conditions.
- This mixture will produce good cuts of quality hay or silage.
- Also provides excellent productive grazing.
- Includes deep rooting species.
- We can add herbs to this mixture and the clover can be increased or decreased as required. Contact us for details

**U** 5+ Years Dual Purpose **SR** 13.50 kgs/Acre

### Mixture:

2.00kg Callan LATE DIP  
1.50kg Melfrost LATE TET

6.00kg Laura Meadow Fescue  
1.50kg Rasant Timothy

1.50kg Comer Timothy  
1.00kg Restormel White Clover Mixture



## Traditional Beef & Sheep

- Coarse grazing for beef and sheep.
- Can be utilised for a wide range of soil types.
- Enables high protein grazing all growing season
- Includes deep rooting species
- Graze frequently, top if necessary.
- Allow to seed every 2-3 years for the red clover.
- Can add herbs for a complete traditional sward.

**U** 5 +Years Grazing **SR** 13kgs/Acre

### Mixture:

1.50kg Agaska Int DIP  
1.50kg Swan Late DIP  
1.50kg Nashota Late TET

2.00kg Laura Meadow Fescue  
3.00kg Barelite Soft Leaved Tall Fescue  
2.00kg Amba Cocksfoot

0.50kg Rasant Timothy  
0.50kg Merula Red Cover  
0.50kg Restormel White Clover Blend

# Recommended Mixtures



## Sam3 Multi Species Ley

- This mix has been specifically formulated to comply with the requirements for the SFI Sam3 scheme without losing any production. Whilst combining the benefits of varying root depths with the inclusion of the soft leaf tall fescue.
- Whilst perfectly suited to cutting or grazing, if using for a cutting mix then we would recommend the use of a silage inoculant to aid the preservation of the silage due to the high buffering capabilities of the Legumes.



Cutting or grazing



14kgs/Acre

### Mixture:

4.00kg Aston Crusader Hybrid Tet  
3.50kg Chatsworth Int Tet  
1.50kg Boyne Int Dip  
0.60kg Comer Timothy

1.50kg Soft Leaf Tall Fescue  
0.50kg Meadow Fescue  
0.60kg Red Clover Mix  
0.75kg White Clover Mix (Med/large Blend)

0.50kg Alsike Clover  
0.05kg Burnet  
0.25kg Plantain  
0.10kg Yarrow  
0.15kg Sheeps Parsley



## Cut and Graze Red Special

- This mixture is perfectly suited for a Medium/Long term cut and graze mixture. The Red Clover will persist for up to 3 years in optimum conditions, and along side the white clover, it will fix a sensible amount of nitrogen for the grasses.
- The mixture contains mainly Tetraploid grasses for an increase in sugars, whilst also being a mix of strong hybrid and perennial grasses which will give fantastic yield for both cutting and grazing. The final addition of 2.5 kg of a Diploid will give it a good strong base.



3-5 years Cut and Graze



15kgs/Acre

### Mixture:

2.50kg Cordial Hybrid Tet  
2.25kg Kirial Hybred Tet  
2.75kg Nolwen Int Tet

2.00kg Galgorm Int Tet  
2.50kg Nifty Int Dip

1.00kg White Clover Blend  
2.00kg Red Clover Blend



## South West Seeds and Germinal: A Partnership Rooted in Excellence

South West Seeds is proud to have a long-standing relationship with Germinal. As a pioneering grass and forage breeder and supplier, Germinal has been supporting grassland-based businesses with 200 years of knowledge and expertise.

### Introducing Climate Smart Solutions

We are now excited to stock Germinal's new Climate Smart mixture ranges which address five vital climate challenges impacting livestock farming. These innovative mixtures recognise that today, modern grassland farming demands the perfect balance of yield quality and environmental benefit delivering performance plus sustainability.

The mixtures include Germinal's award-winning Aber High Sugar grass varieties, world leading hybrid clovers, multi-species biodiversity and soil health improvers and are available in cutting, grazing and dual-purpose options.

Germinal's Climate Smart solutions have been expertly formulated and bring outstanding performance that allows you to produce food profitably while reducing your environmental impact.

Together, with best practice, these mixtures will support us in meeting net-zero targets.

#### Climate Smart **CLEAN**

Scientifically proven to reduce harmful emissions, Germinal's Aber High Sugar Grasses enable the CLEAN range to offer superior forage performance while lowering harmful livestock emissions.

#### Climate Smart **CAPTURE**

CAPTURE mixtures contain nitrogen fixing clovers that reduce the need for fertiliser applications, helping support the environment, livestock production, and cost control.

#### Climate Smart **RESTORE**

RESTORE is a dedicated range of government scheme-compliant mixtures for nature recovery. From clever clovers to healthy hedgerows, multi-species to meadows, all are expertly selected for forage performance with environmental benefits.

#### Climate Smart **THRIVE**

Boost soil fertility, structure and below-ground biodiversity with THRIVE mixtures that enrich soil and reduce compaction to support and sustain healthy crop growth and yield.

#### Climate Smart **ADAPT**

Developed to support stressed pastures in extreme weather conditions, ADAPT mixtures contain tolerant varieties that can withstand a wider range of temperatures and drought conditions.



# Roots & Green Manuring



## Early Sow Root Mix

- Quick to establish with high protein.
- Ideal for fattening stock.
- Stock should be introduced gradually over a two week period and an area of grassland should be made available for the animals to return to.
- Sow April-September: provides grazing July-December.
- This product is untreated.

**SR** 2.25kg/Acre

**SD** April- September

**G** July- December

Mixture:

1.00 kg Rape Kale Hybrid

0.50 kg Stubble Turnip

0.75 kg Kale



## Late Sow Root Mix

- Ideal for sowing after cereals.
- Good winter hardiness and very palatable.
- Stock should be introduced gradually over a two week period and an area of grassland should be made available for the animals to return to.
- Sow mid July-mid September, graze from late December onwards.
- This product is untreated.

**SR** 2.25kg/Acre

**SD** July- Mid- September

**G** Late December Onwards

Mixture:

0.75kg Rape Kale Hybrid

0.75kg Stubble Turnip

0.75 kg Forage Rape

# Forage/ Catch Crops

When grass crops are compromised during dry summers or cold winters, forage crops provide highly palatable alternative fodder. The crops are high in protein with low production costs, reducing the need to use expensive, bought in feed.

**Stubble Turnip** – Our favourite variety is Frisia. We have been using this versatile variety for many years as a straight or in our root mixtures. Large purple skin, white flesh and strap leaves. It sits high in the ground making it easy for feeding in situ or lifting and clamping. Sow at 2-3 kilos per acre.



**Forage Rape** - Short growing season 70-80 days with good yield of succulent leafy, highly digestible, protein rich forage. Best used as a catch or pioneer crop, Sow 2.5 – 4 kilos per acre, or as a nurse crop for new grass seeds @ 0.200 kg – 0.300 kg per acre. Ideal for grazing sheep or cattle. This crop will require fertiliser incorporated at sowing and later applications. We are offering Akela as a stock variety which shows extremely high dry matter, vigorous growth and rapid establishment.

**Fodder Beet** – We can offer most varieties available in the UK with varying Dry Matter Content. From Brigadier (mangel type) 14.5% DM shallow rooted / small tops, to the variety Brick, which is 23.6% DM with deep roots and large tops. Sowing rate 45k – 50k seeds per acre.

**Kale** - This is a popular forage crop, quick to appear and establish in the field. It can be sown from April once soil temperatures have risen to 10-12 degrees. Sowing into cooler autumn soils is not recommended, early August is normally the latest time to sow. The crop is usually grown for cattle/sheep and grazed during the Autumn/ Winter period. We are majoring on the variety Inka which is a newer variety and classed as a giant Kale. Proteor, is an intermediate stem height variety and being a Marrow Stem Type is a dual purpose variety for both stock and game cover. Astera is suitable for cattle and sheep grazing being very winter hardy it also produces high crude protein yields. Sow 1 kilo per acre when direct drilling or 3 kilos per acre when broadcasting.



**Root mixtures** – These are high protein, winter hardy mixtures which extend stock grazing periods. Root mixtures use a balance of stubble turnip, forage rape and kale to create fodder either before Christmas (Early Sow) or in January or February March, (Late Sow).



**Top Tip** - check pH before drilling. Forage crops are very sensitive to low pH, (even a pH of 6, will reduce yields).

Root/ catch crop mixtures can be individually mixed to customers' own requirements.

# Game Cover



## Kale Feeder

- Carbon (Mustard/Kale ) has red stems, which has a natural resistant to Flea Beetle.
- Carbon will give extremely quick cover and provide a seed source when sown early
- comparable in feed value to second year kale.
- New cover & feed mixture that includes a Kale mixture and Carbon.
- Kale provides excellent cover.

**SR** 3kg/Acre    **SD** April- May    **U** October- February

### Mixture:

30.00%	Proteor Kale	25.00%	Rebound Rape Kale Cross
25.00%	Inka Kale	20.00%	Carbon Hybrid



## Yellow Tide

- Visually striking mixture that gives an excellent level of cover of varying heights.
- Produces huge amounts of seed from the majority of ingredients.
- Seeds produced are high in protein, especially from the Quinoa (14% protein).
- The Millet blend includes Red, White, Pearl & Japanese Reed Millet (great cover & seed source).

**SR** 8kg/Acre    **SD** April- May    **U** September - February

### Mixture:

55.00%	Giant Sunflower	10.00%	Fodder Radish	5.00%	Quinoa Blend
20.00%	Linseed	10.00%	Millet Blend		



## Rescue Mixture

- Very quick to establish.
- Suitable for patching poorly established or damaged sowings.
- Can be broadcast directly into standing cereals or stubble for late cover.
- A very popular lifesaving rescue crop.
- Extremely fast to establish.
- Can be sown very late into the growing season and will last the season.

SR 5kg/Acre SD July- August U October- February

### Mixture:

1.25kg	Mustard	0.75kg	Forage Rape	0.75kg	Fodder Radish
1.00kg	Frisia Stubble Turnip	0.75kg	Carbon Brassica Carinata	0.50kg	Rape/Kale Hybrid

NEW!



## Pheasant Feed

- We are now producing feed for game birds. Our standard mixture will be a wheat/cut maize/aniseeed mixture bagged in 25kg sacks.
- However, we are able to tailor the feed to suit your needs, by adding in or taking ingredients away.
- The mixture can also be supplied in 500kg bags.
- Please call for enquiries.

U October- February

### Mixture:

80%	Wheat	11/tonne	Aniseed
20%	Cut Maize		

# SFI Schemes

## CSAM2/SAM2 - Multi-species Winter Cover Crop

### Pay

£129/ ha annually

### Duration

3 years

### Action's Aim

To minimise nutrient leaching, soil erosion and runoff

You must establish a multi-species cover crop on land entered into this action which will not be harvested as a 'cash crop'. A 'cash crop' means a crop grown to be harvested for commercial use.

You must not do the following on the well-established cover crop:

- Mechanically apply any fertilisers or manures.
- Destroy it before the end of the winter months, unless you're establishing an early-sown spring crop.



### CSAM2/ SAM2 Nitrogen Fixer Cover Crop

- Excellent nitrogen fixing.
- Vigorous growth.
- Winter Hardy Vetches.
- Good weed suppressor.

**SR** 12kgs/Acre

#### Mixture:

40.00%	Winter Forage Rye	35.00%	Common Vetch
5.00%	Balansa White Clover	20.00%	Winter/Hairy Vetch



### CSAM2/SAM2 Non Brassica Cover Crop

- Cost effective.
- Very rapid growing.
- Excellent weed suppressor.
- Favourable soil conditioner.
- Excellent for holding nitrogen.

**SR** 10kgs/Acre

#### Mixture:

3.00kg	Linseed / Flax	1.00kg	Berseem Clover
2.50kg	Buckwheat	2.00kg	Common Vetch
0.50kg	Phacelia	1.00kg	Crimson Clover

# CSAM2/ SAM2 Mixtures



## CSAM2/ SAM2 Grazeable Cover Crop

- Suitable for arable or stock farm.
- Diverse cover crop designed with choice for grazing.
- Improves stock liveweight gain.
- High proteins.
- Palatable for stock.

**SR** 7kgs/Acre

### Mixture:

0.27kg	Alsike Clover	0.35kg	Brown Mustard
0.27kg	Crimson Clover	0.30kg	Phacelia
0.28kg	Balansa White Clover		
0.28kg	Berseem Clover (Egyptian)		
2.25kg	Common Vetch		
1.50kg	Winter Vetch		
0.30kg	Stubble Turnips		
0.50kg	Forage Rape		
0.70kg	Fodder Radish		



## CSAM2/ SAM2 Rapid Cover Crop

- Excellent for holding nitrogen.
- Incorporate to produce Bio Fumigation.
- Very quick growing annual cover crop. Do not let Phacelia flower.
- Nitrogen scavengers and deep rooting plants.
- Natural weed suppressing and soil conditioning.

**SR** 4.5kgs/Acre

### Mixture:

2.00kg	Yellow Mustard
2.00kg	Fodder Radish
0.50kg	Phacelia

# SOH2: Multi-species Spring/ Summer Cover Crop

## Pay

£163/ ha annually

## Duration

3 years

## Action's Aim

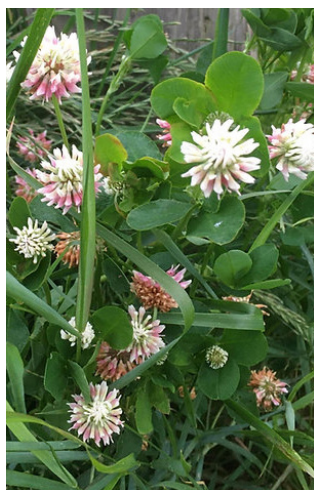
To minimise nutrient leaching, soil erosion and runoff

You must establish a multi-species cover crop mix during the spring and summer months (usually between March and May and June- August)

You must use a rapid growing seed mix that contains at least 4 species. This must include 2 species from two or more of the following plant families; Brassicas, Legumes, Cereals and Grasses, with grasses making up no more than 25% of the total mix by weight and herbs.

You must not:

- Cut it or graze it with livestock (other than when destroying the cover crop).
- Mechanically apply any fertilisers or manures.
- Destroy it more than 2 weeks before you intend to sow the next main crop.



## SOH2/SOH3 Lightning Grass/Clover Mixture

- Fantastic weed suppressant.
- Excellent nitrogen fixer, nitrogen holder and soil conditioner.
- Has four species from three different plant families.

**SR** 12kgs/Acre

### Mixture:

6.00kg	Lemnos	2.00kg	Balansa
3.00kg	Melsprinter	1.00kg	Crimson Clover



## SOH2/SOH3 Spring/ Summer Cover Crop

- Super fast establishment mixture.
- Balansa clover has long deep rooting tap roots and is a nitrogen fixer.
- Crimson clover is fast to establish and fixes large amounts of nitrogen.

**SR** 4.5kgs/Acre

### Mixture:

1.50kg	Yellow Mustard	0.50kg	Phacelia
1.50kg	Fodder Radish	1.00kg	Crimson Clover



# SOH4: Winter Cover following Maize Crops

## Pay

£203/ ha annually

## Duration

3 years

## Action's Aim

To reduce the risk of soil erosion and surface runoff

You must establish a quick growing cover crop as soon as possible after harvesting the maize crop, in time to establish before winter (this will usually be no later than around mid-October).

- You can graze the cover crop with livestock, but it must still be well-established over the winter months.
- Once the maize crop has been harvested, you must not apply fertilisers or manures to the winter cover crop during the autumn or winter months.
- If you're establishing an early-sown spring crop, you may destroy the winter cover crop before the end of the winter months. You must not do this more than 6 weeks before you establish the early-sown spring crop.
- When you destroy the cover crop, you should try to minimise risks such as compaction, poaching, soil runoff or erosion.



## Blizzard Winter Cover Crop

- Super fast to establish.
- Ideal for sowing after maize.
- Reduces nitrogen leaching over winter.
- Improves fertility and soil structure.

**SR** 16kgs/Acre

### Mixture:

10.00kg Forage Rye  
1.00kg Fodder Radish  
5.00kg Westerwolds



# CSAM3/SAM3/ GS4 - Herbal Leys

## Pay

£382/ ha annually

## Duration

3 years

## Action's Aim

To improve and maintain the soil's structure, carbon, biology and fertility

If you're establishing an herbal ley on land identified by you as being at risk of soil erosion or runoff, you must use establishment techniques which minimise the risk of soil erosion or runoff.

You must minimise use of inorganic fertilisers containing nitrogen. Usually, this will be no more than around 40 kilograms (kg) of nitrogen per ha per year.

You must not use the established herbal ley for storage or apply pesticides on it, except:

- For herbicides to weed wipe or spot treat to control injurious weeds, invasive non-native species, or nettles or to destroy the existing ley to establish a new herbal ley.



## CSAM3/ SAM3/GS4 Legume and Herb Rich Swards

- High legume content proving good summer cover and grazing.
- Supplies food and habitat for invertebrates including crop pollinators.
- Allow time for all species to germinate
- Productive and very high-quality forage
- Reduces use of applied fertiliser and performs on most types of soils.

**SR** 12kgs/Acre

### Mixture:

2.50kg	Boyne PRG Int Dip	0.30kg	Birdsfoot Trefoil
2.60kg	PRG Late Dip	0.50kg	Alsike Clover
0.55kg	Sparta Cocksfoot	0.60kg	Lucerne Pre Inoculated Alfalfa
0.80kg	Laura Meadow Fescue	0.24kg	Choice Chicory
0.90kg	Comer Timothy	0.36kg	Sheeps Parsley
0.50kg	Swaj Tall Fescue	0.36kg	Tonic Plantain
0.50kg	Altaswede Clover	0.49kg	Sheeps Burnet
0.70kg	Merula Red Clover	0.10kg	Yarrow



## CSAM3/SAM3 / GS4 Heavy Land Herbal

- Mixture uses grasses suitable for heavy wetter ground.
- Productive and very high-quality forage and reduces use of applied fertiliser.
- Abundant legumes and deep rooting herbs.
- Supplies food and habitat for invertebrates including crop pollinators.
- Use on arable and temporary grassland.

**SR** 12kgs/Acre

### Mixture:

2.10kg	Laura Meadow Fescue	0.20kg	Leo Birdsfoot Trefoil
2.65kg	Toddington PRG Late Dip	0.40kg	Alice White Clover
0.80kg	Comer Timothy	0.30kg	Merlyn White Clover
1.00kg	Lofa Festulolium	1.00kg	Common Vetch
1.20kg	Swaj Tall Fescue	0.11kg	Choice Chicory
1.00kg	Merula Red Clover	0.16kg	Tonic Plantain
0.40kg	Aurora Alsike Clover	0.16kg	Sheeps Parsley
0.25kg	Yellow Blossom Sweet Clover	0.22kg	Sheeps Burnet
		0.05kg	Yarrow

# CSAM3/ SAM3/ GS4 Mixtures

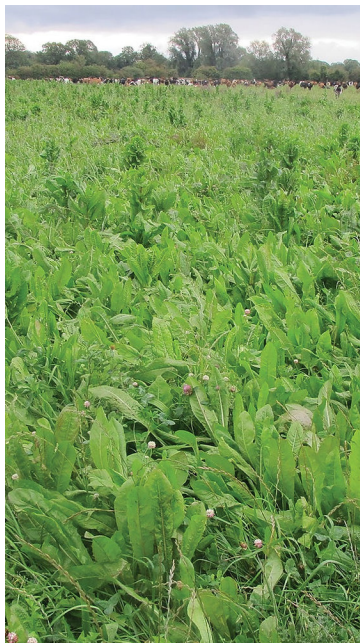


## CSAM3/SAM3/GS4 Herbal Diverse

- Diverse mixture of grass, legume and herb seeds that creates a multi-functional sward.
- Strong legume content to increase nitrogen production.
- Deep rooted mix that will improve soil structure.
- Species chosen to seek out micro-nutrients and moisture.
- Good grazing with medicinal benefits for livestock.
- Suitable for a wide range of soil types.

**SR** 12kgs/Acre

<b>Mixture:</b>		0.75kg	White Clover
2.50kg	Persius	0.45kg	Sainfoin
1.50kg	Sparta	0.50kg	Aurora Alsike
1.00kg	Laura	0.30kg	Leo Birdsfoot Trefoil
1.00kg	Maxima	0.15kg	Choice Chicory
0.80kg	Comer	0.30kg	Sheeps Burnet
1.00kg	Kora	0.22kg	Sheeps Parsley
0.50kg	Ezzelina Pre-Inoculated Alfalfa	0.22kg	Tonic Plantain
0.75kg	Red Clover	0.06kg	Yarrow



## CSAM3/SAM3/GS4 Herbal Eco

- Good value option of the herbal diverse or heavy land herbal mixture.
- Wide range of species that gives a multifunctional sward.
- Beneficial to soil health and increases soil organic matter.
- Tolerant to disease and environmental stress.

**SR** 10kgs/Acre

<b>Mixture:</b>		0.14kg	Sheeps Burnet
3.00kg	Merlin Festulolium	0.10kg	Sheeps Parsley
2.00kg	Chatsworth PRG Int Tet	0.10kg	Tonic Plantain
2.00kg	Boyne PRG Int Dip	0.03kg	Yarrow
0.40kg	Sparta Cocksfoot		
0.40kg	Laura Meadow Fescue		
0.45kg	Comer Timothy		
0.50kg	Red Clover Blend		
0.30kg	White Clover Blend		
0.50kg	Aurora Alsike Clover		
0.08kg	Choice Chicory		

# CIPM2/ IPM/AB8- Intergrated Pest Management

## CIPM2 Flower-rich Grass Margins

### Pay

£798/ ha annually

### Duration

3 years

### Action's Aim

To provide habitat for invertebrates, including natural crop pest predators

You must establish a flower-rich grass mix as a margin, block or in-field strip on land entered into this action. You must use a seed mix which includes at least both:

- 4 grass species (not ryegrass) – these should make up no more than 90% of the total mix by weight
- 10 wildflower species – with no individual flower species being more than 25% of the total wildflower species element by weight

You must not:

- Cut or graze it with livestock in a way that means this action's aim cannot reasonably be expected to be achieved.
- Use them for regular vehicular access, turning or storage (for example, storing bales or machinery)
- Mechanically apply any fertilisers and manures.
- Apply pesticides, except for herbicides to weed wipe or spot treat to control injurious weeds, invasive non-native species, or nettles.



### CIPM2/ IPM2/AB8 Flower Rich Margins

- Provides a large amount of pollen and nectar rich plants throughout the year.
- Creates habitats for beneficial insects such as butterflies and hoverflies and farmland birds.
- Contains UK native wildflowers and low maintenance grasses.
- Includes 6 grass species and more than 20 species of wildflowers.
- Fits the criteria for IPM2 Flower Rich Margins and AB8 Flower Rich Margins.

SR

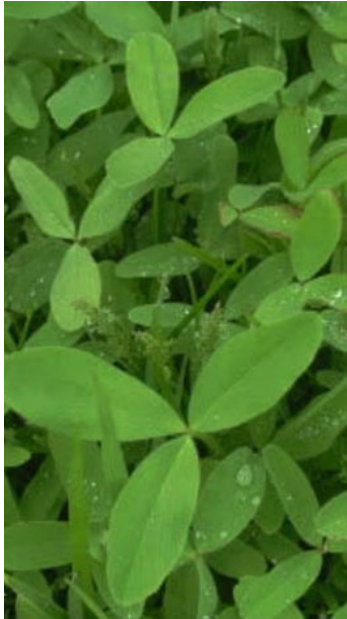
8 kgs/Acre

Organic also Available

### Mixture:

29.00%	Slender Creeping Red Fescue	1.00%	Smooth Stalked Meadow Grass
28.00%	Chewings Fescue	2.50%	Sainfoin
26.00%	Hard Fescue	1.50%	Crimson Clover
3.00%	Common Bentgrass	1.00%	Phacelia
3.00%	Crested Dogstail	5.00%	AP2 Eco Wildflower Mix

# CIPM3/IPM3 Mixtures



## CIPM3/IPM3 OSR Shielding Mix

- Cost effective.
- Very rapid growing.
- Excellent weed suppressor.
- Favourable soil conditioner.
- Excellent for holding nitrogen.

**SR** 5kgs/Acre

### Mixture:

75.00% Buckwheat  
25.00% Berseem Clover



## CIPM3/ IPM3 OSR Camouflage Mix

- Crop has vigorous growth.
- Inhibits weed growth.
- Annual companion for oilseed rape.
- Fixes nitrogen.

**SR** 5kgs/Acre

### Mixture:

70.00% Buckwheat  
20.00% Berseem Clover  
10.00% Fenugreek



## CIPM3/ IPM3 Lucerne / Sainfoin Grass Companion

- Companion mix to be sown alongside Sainfoin or Lucerne.
- Mixture improves soil structure and increases organic levels.
- Suppresses weeds.
- Provides extra forage.
- Fits criteria for IPM3 (SFI).

**SR** 4kgs/Acre

### Mixture:

2.00kg Laura Meadow Fescue  
2.00kg Lischka Timothy



## CIPM3/ IPM3 Maize Undersowing

- Satisfies criteria for IPM3 under SFI scheme.
- Reduces nitrogen run-off and soil erosion.
- Improves soil structure and organic matter levels.
- Fast growing and easy to establish.
- Improves soil moisture retention.

**SR** 4kgs/Acre

### Mixture:

0.60kg Lemnos Westerwold Tet  
0.60kg Libonus Westerwold Tet  
1.40kg Alamo IRG Dip  
1.40kg Gemini IRG Tet

# CAHL1/ AHL- Pollen and Nectar Flower Mix

Pay

£739/ ha annually

Duration

3 years

Action's Aim

To provide food for beneficial pollinators

You must use a grass-free seed mix which includes at least 6 flower species, with no individual species being more than 50% of the total mix by weight.

The seed mix must include at least 2 of the following flower species:

- Common knapweed
- Musk mallow
- Oxeye daisy
- Wild carrot
- Yarrow

Once the pollen and nectar flower mix block or strip is established (usually from the second spring after sowing), you must maintain it.

You must not:

- Cut or graze it with livestock in a way that means this action's aim cannot reasonably be expected to be achieved.
- Use it for regular vehicular access, turning or storage (for example, storing bales or machinery)
- Apply any fertilisers and manures.
- Apply pesticides, except for herbicides to weed wipe or spot treat to control injurious weeds, invasive non-native species, or nettles.



## CAHL1/AHL1/AB1 Pollen & Nectar

- Provides large amounts of pollen and nectar rich flowers from late Spring to Autumn.
- Attracts pollinating insects such as bumblebees and butterflies.
- Over 20 species of wildflowers in the mixture.
- Suitable for most soil types.

**SR** 6kgs/Acre

### Mixture:

10%	Alsike Clover
10%	Birdsfoot Trefoil
5.0%	Black Medick
40%	Common Vetch
10%	Merula Red Clover
10%	Altaswede Red Clover (Late Flowering)
5.0%	Lucerne
5.0%	Sweet Clover
5.0%	AP2 Eco 100% Wildflower

# CAHL2/ AHL2- Winter Bird Food on arable/horticultural land

## Pay

£853/ ha annually

## Duration

3 years

## Action's Aim

To provide food resources for smaller farmland birds

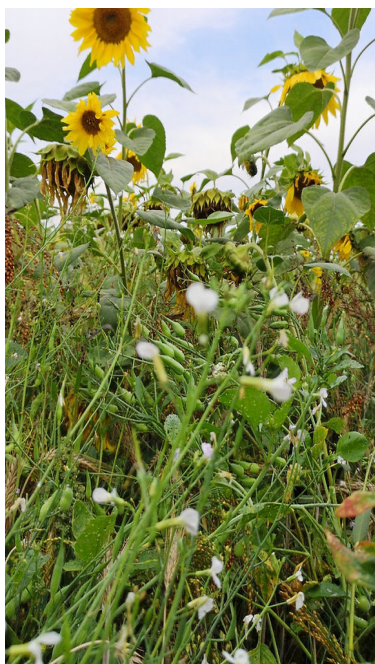
You must use a seed mix which includes at least 6 small seed-bearing crops, which are suitable for smaller farmland bird species. The mix must not include:

- Artichokes
- Reed canary grass
- Giant and intermediate sorghum
- Maize
- Miscanthus
- Sweet clover
- Tic beans.

If you sow an annual mix, it can include a range of cereals, brassicas or other small-seeded crops. If you sow a 2-year mix, it can also include biennial crops such as kale, stubble turnip or teasel.

You must re-establish a 1-year mix annually and 2-year mixes every other year, so they continue to produce an extended supply of small seeds. This can be at the same location or a different location.

You must not: use the winter bird food mix block or strip for regular vehicular access, turning or storage (for example, storing bales or machinery).



## CAHL2/AHL2/AB9 1 Year Winter Bird Food

- Annual mixture that will last 1 year.
- Provides a large selection of seeds for feed during autumn and winter for small birds and mammals.
- Attracts beneficial insects when flowering in the summer.
- Visually attractive and colourful from sunflowers and phacelia.
- Complies with CAHL1/AHL2 and AB9.

SR

20kgs/Acre

### Mixture:

60.00%	Spring Triticale	2.00%	Quinoa Blend
10.00%	Spring Barley	3.50%	Mustard
6.00%	Linseed	4.00%	Rape Kale Hybrid
5.50%	Millet Blend	1.00%	Phacelia
3.00%	Fodder Radish	5.00%	Sunflower Blend



# CAHL1/AHL2 Mixtures



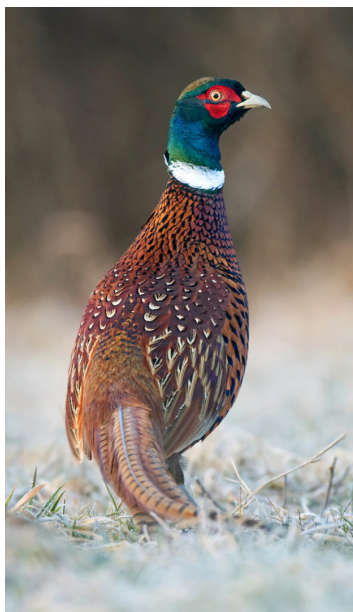
## CAHL2/ AHL2/AB9 2 Year Winter Bird Food

- Winter bird food mix that lasts 2 years.
- Provides a large selection of seeds for feed during autumn and winter for small birds and mammals.
- Attracts beneficial insects when flowering in the summer.
- Visually attractive and colourful from sunflowers and phacelia.
- Includes Kale and Chicory plus many seeds from brassicas in the 2nd year.

**SR** 20kgs/Acre

### Mixture:

60.00%	Spring Triticale	2.20%	Mustard
10.00%	Spring Barley	3.00%	Stubble Turnip
5.00%	Linseed ( Flax)	4.20%	Kale Blend
5.00%	Millet Blend	1.00%	Phacelia
3.00%	Fodder Radish	0.60%	Choice Chicory
2.00%	Quinoa Blend	4.00%	Sunflower Blend



## CAHL2/AHL2/AB9 Late Sown Winter Bird Food

- Winter bird food mix suitable for sowing in the Autumn.
- Will attract beneficial insects when flowering such as bumblebees and butterflies.
- Phacelia provides good colour.
- Complies with AHL2 and AB9.

**SR** 20kgs/Acre

### Mixture:

11.00%	Winter Barley (or Rye)	1.00%	Phacelia
1.00%	Rape Kale Hybrid	0.25%	Choice Chicory
1.00%	Late Flowering Fodder Radish	0.25%	Brown Mustard
1.00%	Akela Forage Rape		
2.00%	Gold of Pleasure (Camelina)		
2.50%	Linseed		

# CAHL3/ AHL3- Grassy Field corners or blocks

## Pay

£590/ ha annually

## Duration

3 years

## Action's Aim

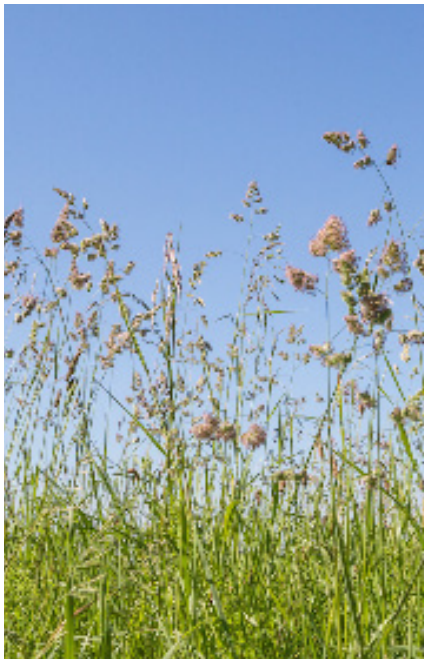
To provide year-round habitat for a range of wildlife

To establish the grassy field corners or blocks you must either sow them or allow the areas to naturally regenerate. During the first 12 months after sowing them, or allowing them to naturally regenerate, you can regularly cut or graze them to:

- Control annual weeds
- Encourage new grass shoots to develop

You must not do the following on the grassy field corners or blocks once they're established:

- Graze them with livestock in a way that means this action's aim cannot reasonably be achieved.
- Cut them, except for localised cutting to control injurious weeds or invasive non-natives, soft and hard rush, or nettles.
- Use them for regular vehicular access, turning or storage (for example, storing bales or machinery).
- Carry out activities that may disturb breeding birds or damage nests, as birds, nests and eggs are protected by law.
- Apply any fertilisers, manures or lime.
- Use pesticides, except for herbicides to weed wipe or spot treat to control injurious weeds, invasive non-native species, or nettles.



## AHL3&4/IGL3 Buffer Strips

- Available in two options A & B.
- Quick to establish and for weed suppression.
- Highly suitable for margins and buffer strips around fields.
- Complies with SFI (AHL3 & 4).

**SR** 8kgs/Acre

### Mixture:

#### Option A:

- 10.00% Timothy
- 20.00% Cocksfoot
- 35.00% Strong Creeping Red Fescue
- 20.00% Meadow Fescue
- 15.00% Agri Tall Fescue

#### Option B:

- 30.00% Strong Creeping Red Fescue
- 10.00% Meadow Fescue
- 20.00% Hard Fescue
- 10.00% Timothy
- 15.00% Tall Fescue
- 15.00% Chewings Fescue

# AHW1-AB16- Bumblebird Mix

## Pay

£747/ ha annually

## Duration

3 years

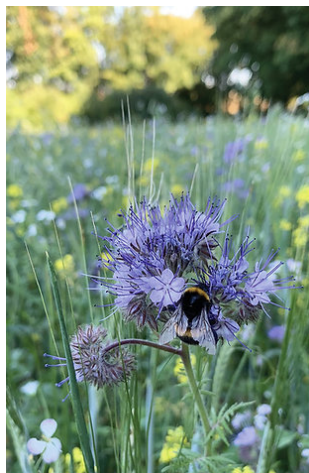
## Action's Aim

To increase Biodiversity & provide food for birds and insects

You must establish a bumblebird mix as a block or strip on land entered into this action. You must use a seed mix which as a minimum includes both:

- 6 flower species
- 6 seed-bearing crops, with a maximum of 3 cereal crops from barley, oats, rye, triticale and wheat.

You must not apply pesticides, except for herbicides to weed wipe or spot treat to control injurious weeds, invasive non-native species, or nettles.

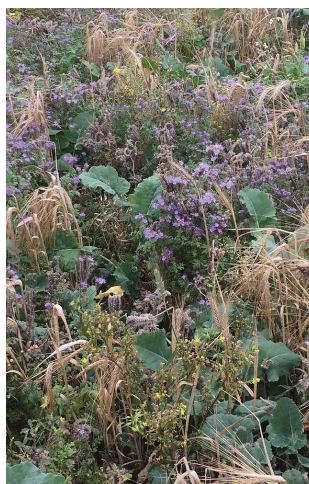


## AHW1 Spring Sown Bumblebird

**SR** 24kgs/Acre

### Mixture:

8.00kg	Spring Triticale	0.25kg	Alsike Clover
8.00kg	Spring Wheat	0.25kg	Birdsfoot Trefoil
1.20kg	Millet Blend	1.60kg	Common Vetch
0.40kg	Fodder Radish	1.00kg	Crimson Clover
0.75kg	Gold Of Pleasure	0.25kg	Lucerne (Pre-inoculate) Alfalfa
0.80kg	Kale Blend	0.25kg	Phacelia
1.00kg	Linseed (Flax)	0.25kg	Red Clover Blend



## AHW1 Autumn Sown Bumblebird

**SR** 24kgs/Acre

### Mixture:

8.00kg	Winter Triticale	1.20kg	Crimson Clover
8.00kg	Winter Wheat	0.25kg	Lucerne (Pre-inoculated) Alfalfa
0.40kg	Fodder Radish	0.25kg	Phacelia
0.75kg	Gold Of Pleasure	0.25kg	Red Clover Blend
0.80kg	Kale Blend		
2.00kg	Linseed /Flax		
0.25kg	Alsike Clover		
0.25kg	Birdsfoot Trefoil		
1.60kg	Common Vetch		

# AHW2-AB12- Supplementary Winter Bird Food

## Pay

£732/ tonne annually

## Duration

3 years

## Action's Aim

To provide food to farmland birds when seed is in short supply

You must spread a winter supplementary feeding mix in a way that can reasonably be expected to achieve this action's aim, including:

- Dividing the total weight of mix as equally as possible between the multiple feeding areas
- Spreading the mix at least once a week from over the winter until mid-spring in the following year (usually from early December to late April)

You must use a winter supplementary feeding seed mix that contains both:

- Cereals (not maize) – these should make up no more than 70% of the total mix by weight
- Small non-cereal seeds – these should make up at least 30% of the total mix by weight, with no individual species being more than 50% of the non-cereal element by weight

The small non-cereal seeds element must contain at least 3 of the following species: canary seed, linseed, oilseed rape, red millet, sunflowers, white millet.

You must not:

- Use feed hoppers to supply more than around 10% of the seed mix during each feeding period (from later winter to mid-spring).
- Use tailings (small seeds and chaff removed from the harvested crops) in the seed mix.

You must keep a written 'feeding diary' which includes:

- Details of the mix used, including the weight of the cereals and small non-cereal seeds, elements and cost.
- Feeding dates.
- Method of feeding – spreading or hopper.
- Amount fed.
- Location of feeding areas.



## AHW2 Ready Mix Supplementary Winter Feeding

**SR** 24kgs/Acre

### Mixture:

- Wheat
- White Millet
- Canary Seed
- Rape Seed
- Black Sunflowers

Price Per 1000kg

1 part seed mix to 2 parts wheat

# AHW3-AB3: Beetle Banks

## Pay

£764 /ha annually

## Duration

3 years

## Action's Aim

To provide nesting and foraging habitats for ground nesting species

You must establish an in-field beetle bank by:

- Creating a raised earth ridge.
- Sowing a mixture of fine-leaved grasses, such as red fescue, together with some tussock forming varieties like tall fescue, timothy and cocksfoot.

You can leave gaps of up to around 40m at each end of the beetle bank to allow machinery access.

Once the grassy mix on the beetle bank is established, you must maintain it in a way that can reasonably be expected to achieve this action's aim.

You must not apply:

- Any fertilisers, manures or lime.
- Apply pesticides, except for herbicides to weed wipe or spot treat to control injurious weeds, invasive non-native species, or nettles.



## AHW3 Beetle Bank

**SR** 8kgs/Acre

### Mixture:

35.00%	Cocksfoot
17.00%	Tall Fescue
30.00%	Strong Creeping Red Fescue
18.00%	Timothy



## AHW3 Enhanced Beetle Bank with Wildflowers

**SR** 8kgs/Acre

### Mixture:

30.00%	Cocksfoot
17.00%	Tall Fescue
30.00%	Strong Creeping Red Fescue
18.00%	Timothy
5.00%	AP2 Eco 100% Wildflower

# WBD4- Arable Reversion to Grassland with Low Fertiliser Input

## Pay

£489 ha annually

## Duration

3 years

## Action's Aim

To stabilise the soil, reduce nutrient losses and reduce risk of flooding

You must establish a diverse grass sward on land entered into this action. You must use a seed mix which includes at least 5 grass species.

Once the grass sward is established, you must maintain it. To do this, you must manage it in a way that can reasonably be expected to achieve this action's aim. This includes:

- Making sure there's an intact sward throughout the year, with minimal bare ground
- Grazing or cutting the sward during the spring and summer months, with cuttings removed in late summer after the bird breeding season

You must not:

- Graze it with livestock during the autumn and winter months (usually from early October until mid-March).
- Apply pesticides, except for herbicides to weed wipe or spot treat to control injurious weeds, invasive non-native species, or nettles.
- Apply any fertilisers or manures from late summer until mid-winter (usually from mid-August until the end of January) – this is to reduce the risk of runoff
- Apply any livestock manures with 100 kilograms (kg) or more of total nitrogen per ha per year.

## WBD4 Non Ryegrass Pony/ Equine/ Horse Paddock

**SR** 14kgs/Acre

### Mixture:

2.50kg	Pardus Meadow Fescue
2.50kg	Liherold Meadow Fescue
2.00kg	Comer Timothy
2.00kg	Swaj Tall Fescue
1.00kg	Bornito Hard Fescue
3.00kg	Maxima Strong Creeping Red Fescue
0.50kg	Evora Smooth Stalked Meadow Grass
0.15kg	Southlands Crested Dogstail
0.10kg	Meadow Foxtail
0.10kg	Dasas Rough Stalked Meadow Grass
0.15kg	Highland Common Bentgrass



## WBD4 Old Fashioned Permanent Pasture

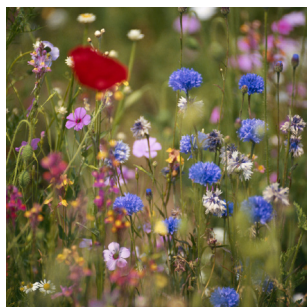
**SR** 14kgs/Acre

### Mixture:

3.00kg	Laura Meadow Fescue
2.50kg	Liherold Meadow Fescue
3.75kg	Persius Festulolium
2.00kg	Comer Timothy
2.25kg	Evora Smooth Stalked Meadow Fescue
0.25kg	Solo Rough Stalked Meadow Grass
0.25kg	Crested Dogstail



# Wildflowers



## Cornfield Annual

A very colourful wildflower mixture that can be sown in the spring or autumn and takes little maintenance. Seed can be sown directly on to bare ground or into existing flower mixture.

All mixtures can be offered as either 100% wildflowers, or mixed with grass, usually at a ratio of 20:80 wildflowers to grass.

[For more information please visit our website.](#)

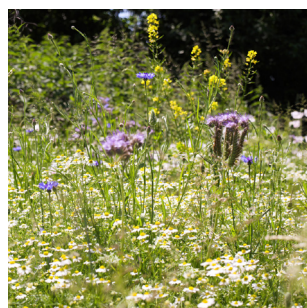


## Value Wildflower Mix

A blend of colourful annual and perennial wildflowers. This mixture will grow in most soil types and is designed for low maintenance. Sow in the spring or autumn.

All mixtures can be offered as either 100% wildflowers, or mixed with grass, usually at a ratio of 20:80 wildflowers to grass.

[For more information please visit our website.](#)



## Bee Happy Mix

This mixture is ideal for lowland meadows, damp or seasonally wet soils. Sow 100% for small areas. For larger areas sow with a grass companion with the grass being 80%. This mixture will flower from spring to late autumn.

All mixtures can be offered as either 100% wildflowers, or mixed with grass, usually at a ratio of 20:80 wildflowers to grass.

[For more information please visit our website.](#)



## Woodland Wildflower

Flowers are suited to full and dappled shade. Offers well scented species. This mixture offers colour amongst the trees from spring until autumn. Thrives in old and young woodland.

All mixtures can be offered as either 100% wildflowers, or mixed with grass, usually at a ratio of 20:80 wildflowers to grass.

[For more information please visit our website.](#)

# Bee Mixtures



## Bumble Bee Delight (Acid Soils)

For areas of low pH values such as heathland and moorland heathers, this mixture offers an excellent blend of high nectar flowers complementing the local flora. Sow 100% in small areas or with grass companion for larger areas.

All mixtures can be offered as either 100% wildflowers , or mixed with grass, usually at a ratio of 80:20 grass to wildflowers.

[For more information please visit our website.](#)

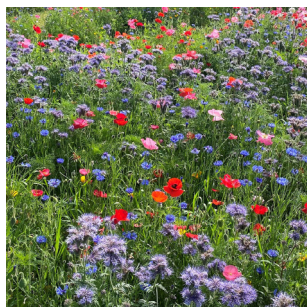


## Bumble Bee (Calcareous Soil Mixture)

Mixture is best suited to lowland meadow grassland and is of value to many different species of bees, hoverflies, beetles and butterflies plus many more insects.

All mixtures can be offered as either 100% wildflowers , or mixed with grass, usually at a ratio of 80:20 grass to wildflowers.

[For more information please visit our website.](#)



## Queen Bee (Neutral Soil)

General purpose seed mixture. This mixture includes a large selection of nectar giving flowers with a varied colourful display. Suitable for bees, hoverflies, butterflies and other wildlife. Sow as pure seed for small areas and for larger areas we would suggest mixing with a grass companion.

All mixtures can be offered as either 100% wildflowers , or mixed with grass, usually at a ratio of 80:20 grass to wildflowers.

[For more information please visit our website.](#)



## Beehive (Neutral Soil)

Suitable for a wide range of soil types ranging from 5.0-6.5 pH. This mixture offers a diverse blend of flowers and colour and benefits bees, hoverflies, butterflies and other species of wildlife.

All mixtures can be offered as either 100% wildflowers , or mixed with grass, usually at a ratio of 80:20 grass to wildflowers.

[For more information please visit our website.](#)



# Lawn & Landscaping



## Premium Lawn Seed

- Low maintenance.
- Incredible fine finish if rolled it will leave a superb striped effect.
- This mixture does not tolerate heavy footfall.
- Optimum pH 5-6.
- Grows on a wide range of soils.
- Excellent all year colour.

**SR** New sowing @ 35-70gm/m<sup>2</sup>  
Overseed @20-35gm/m<sup>2</sup>

### Mixture:

45%	Strong Creeping Red Fescue	5.0%	Smooth Stalk Meadow Fescue
30%	Chewings Fescue	5.0%	Browntop Bent
15%	Slender Creeping Red Fescue		



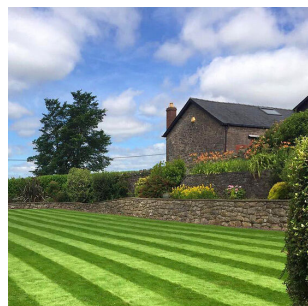
## Hardwearing Lawn Seed

- A tough durable mixture withstanding constant & heavy footfall.
- Includes grass that strengthens the lawn and helps establishment.
- Quick to recover.
- Easy to maintain.
- Ideal for back or front lawn.
- Requires a fine, firm seedbed.

**SR** New sowing @ 35-70gm/m<sup>2</sup>  
Overseed @20-35gm/m<sup>2</sup>

### Mixture:

30%	Dwarf Perennial Ryegrass	5.0%	Smooth Stalked Meadow
30%	Strong Creeping Red Fescue	20%	Chewings Fescue
10%	Slender Creeping Red Fescue	5.0%	Browntop Bent



## All Purpose Amenity Seed

- Ideal for parks, verges, playing fields etc.
- Works well under constant use and lots of wear.
- Quick to establish and recover.
- Highly economic mixture.

**SR** New sowing @ 35-70gm/m<sup>2</sup>  
Overseed @20-35gm/m<sup>2</sup>

### Mixture:

50%	Dwarf Perennial Ryegrass
50%	Strong Creeping Red Fescue



## Caravan Premium Seed

- Easy to maintain - dense bottom to the mixture.
- Fast to recover from heavy wear and tear.
- Hardy and less prone to drought.
- Nitrogen fixing clovers.
- Hardy blend mixture.
- Can be cut as low as a lawn.
- Good disease resistance.

**SR** 80-120kg/Acre

### Mixture:

55%	Dwarf Perennial Ryegrass Blend	10%	Chewings Fescue
30%	Strong Creeping Red Fescue Blend	5.0%	Small White Clover

# Glossary of Grass

## Diploid

2 sets of chromosomes.

Perennial diploids have a prostrate growth habit, filling the bottom of the ley.

## Tetraploid

4 sets of chromosomes.

Higher yielding, higher D value, larger leaves with increased sugar content and more.

## Westerwolds

An annual Italian Ryegrass.

Establishes quickly, produces a large bulk and can be cut several times.

Do not let it go to seed head.



## Italian Ryegrass

Fast growing, economical 2-3 year grass. For best results use

50% Diploid/ 50% Tetraploid.

## Perennial Ryegrass

Classified into 3 categories: Early, Intermediate & Late depending on heading date.

## Hybrids

Biological cross of Italian and Perennial Ryegrass. Combines persistency of Perennial and earliness and productivity of Italian. Used in medium term mixtures, lasting 3-4 Years.

## Festulolium

Hybrid cross of either Italian or Perennial Ryegrass and either Meadow Fescue or Tall Fescue. Fescues add winter hardiness, persistence and stress tolerance and are deep rooting. Digestibility and sugar levels from Ryegrasses.



## Timothy

Highly palatable tussock grass. Non-aggressive, winter hardy and slow to establish. Suited to cool damp soils, with plenty of early production.

## Meadow Fescue

Deep rooting copes well with cool damp conditions and dry conditions. Upgraded yield potential in modern varieties.



# sses and Herbs



## Cocksfoot

Best suited to grazing on dry sandy soils producing excellent grass production.

Management required, as the leaves develop barbs becoming unpalatable if left to grow too tall.



## Sheeps/Salad Burnet

Deep rooting prevents soil erosion.  
Helps with health and liveweight gain in ruminants.  
Anti-oxidising, helping with indigestion in horses.  
Prefers light soils and is drought resistant.

## Red Clover

Nitrogen fixing roots.  
Good for smothering weeds.

High in protein, lasting between 3 and 4 years.



## Sheeps Parsley

High in Iron and Vitamin C.  
Comes to seed head in second year.



## White Clover

Collects Nitrogen from the air, distributing to nearby plants through the rooting system within a few months.

Small leaved clovers suit grazing mixtures, large leaved clovers suit silage mixtures, competing with aggressive grasses.



## Yarrow

Large tap root drawing minerals and trace elements from the soil.  
Rich in Magnesium, Calcium and Phosphate.  
Prevents diarrhoea in sheep.  
As it's invasive, sowing too much can be negative to the sward.  
Manage through grazing



## Ribgrass/ Plantain

Suits most soils types.  
High in minerals,  
especially Copper and  
Selenium.  
Increases milk and meat  
production in sheep  
and cattle.  
Reduces effects of internal  
parasites,  
increases daily liveweight  
gain and is very  
palatable.



## Sainfoin

Perennial legume suiting  
limestone, chalk and  
stony soils.  
Doesn't perform well on  
heavy soils or anything  
with a pH less than 6.2.

## Common/ Winter Vetch

Nitrogen fixing and improves  
soil structure.  
Winter Hardy and high protein  
content.  
Early and rapid establishment  
High nutritional value.



## Birdsfoot Trefoil

Nitrogen fixing legume which won't bloat  
animals and is methane suppressing.  
Produces more Nitrogen than white clover, but  
only lasts 3-4 years.  
Do not overgraze or mow too low (between  
5-10cm) – it requires six weeks to recover.

## Chicory

High in minerals including  
Zinc, Potassium and Copper.  
Helps reduce effects of  
internal parasites.  
Good tolerance to drought,  
acidic soils and major pests.  
Do not allow crown to be taken  
out (mowing or grazing).  
Don't let it go to flower, it will  
become toxic and sour.



## Lucerne/ Alfalfa

Renowned for its slow  
establishment  
High yielding protein  
forage with low  
energy levels.  
Nitrogen fixing with  
long tap roots. Up  
to 4 cuts a year over  
5 years. Can cause  
bloat in grazing stock.  
Suited to sandy/free  
draining soils as it  
searches out moisture.

# Glossary of Wildflowers



Corn Flower



Corn Marigold



Corn Poppy



Corn Chamomile



Corn Cockle



Common Sorrel



Betony



Tufted Vetch



Red Campion



Lady's Bedstraw



Ragged Robin



Devils Bit Scabious



Oxeye Daisy



Fox Glove



Yarrow



Red Clover



White Clover



Phacelia



Yellow Rattle



Self Heal

# Have you seen?







## Our Amenity Grass Seed & Fertiliser Brochure?

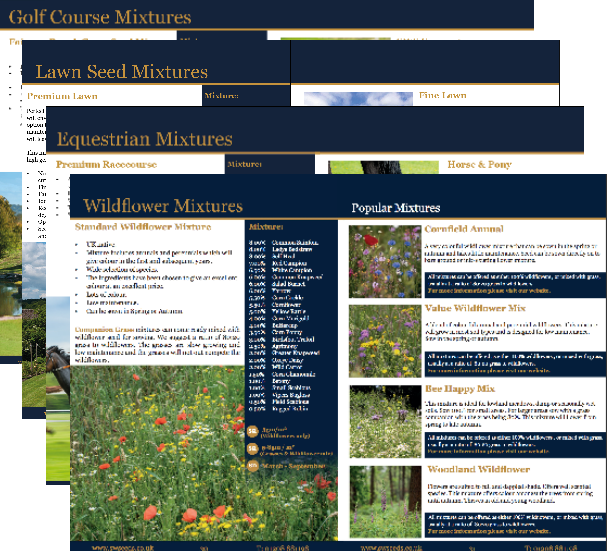


Amenity Grass Seed  
www.swseeds.co.uk

01208 881198  
info@swseeds.co.uk



-  Lawn Seed Mixtures
-  Golf Course & Sports Mixtures
-  Equestrian Mixtures
-  Wildflower Seed
-  Fertiliser
-  Plus much more!



**Golf Course Mixtures**

**Lawn Seed Mixtures**

Premium Lawn     Midlawn     Fine Lawn

**Equestrian Mixtures**

Premium Racecourse     Horse & Pony

**Wildflower Mixtures**

Standard Wildflower Mixture

**Popular Mixtures**

Corefield Annual

Value Wildflower Mix

Bees Happy Mix

Woodland Wildflower

Scan the QR code to view our full Amenity range on our website!





RECOMMENDED

*" We have been using South West Seeds for many years and are extremely pleased with the quality of grass leys. We have received very good advice on seed selection from a seedsman rather than a salesman."*



RECOMMENDED

*" The seed arrived very quickly and I cannot fault the level of service received. The All Seasons Maize seed grew well. I shall definitely be using South West Seeds this year and may look to experiment with bespoke mixtures."*



RECOMMENDED

*"Very good! I was unsure of which grass seed to buy so I asked the question via email. I recieved a swift and very helpful reply. Placed an order which arrived safely. Thank you!"*



RECOMMENDED

*"A great mix of grasses and clover produced a lovely hay crop this spring and survived the drought and is still producing a thick sward"  
( Regal Grass Mixture. p4)*



RECOMMENDED

*"The 4-year Cut & Graze mix is very high yielding combination that establishes quickly and grows well in cooler conditions... Cut & Graze maintains good production in a cycle of 4 year grass and 4 years cereals on our farm in the Blackdown Hills"*



South West Seeds (Cornwall) Ltd.  
Treswarrow Farm  
St Endellion  
Port Isaac  
PL29 3TN

01208 881198 | [info@swseeds.co.uk](mailto:info@swseeds.co.uk) | [www.swseeds.co.uk](http://www.swseeds.co.uk)

Find us on:



Disclaimer: All mixtures are correct at the time of print, any information provided in this catalogue is given in good faith and to the best of our knowledge. Any advice should therefore be taken as general guide only and not relied upon for all conditions and circumstances. We cannot accept any legal liability for information given in this catalogue. In any instance where there are shortages of specified varieties, we reserve the right to substitute and change for similar varieties without notice, this will show on the seed bag label.

All seed is offered subject to remaining unsold at the time of purchase.  
This does not affect your legal rights; our standard terms and conditions apply.